

400 TON *DONOSEV*- CLASS SURVEY SCOUT



The *Donosev class* is the workhorse of the Imperial Grand Survey. Its task is to continually re-survey star systems and worlds within Imperial space, updating maps and maintaining navigational beacons.

The heart of the ship is the survey module, which is usually manned by four survey specialists. The spacedock normally carries three air/rafts, a 50-ton modular cutter with lab module and a spare fuel-skimming module. Survey operations are carried out using a combination of on-board sensors, long-range probes, and cutter overflights. The ship is primarily designed to work from orbit, but some lab space is set aside to handle geological or biological samples. The survey scout is almost never armed, although in dangerous regions the ship can easily mount four turrets at the cost of four tons of cargo space.

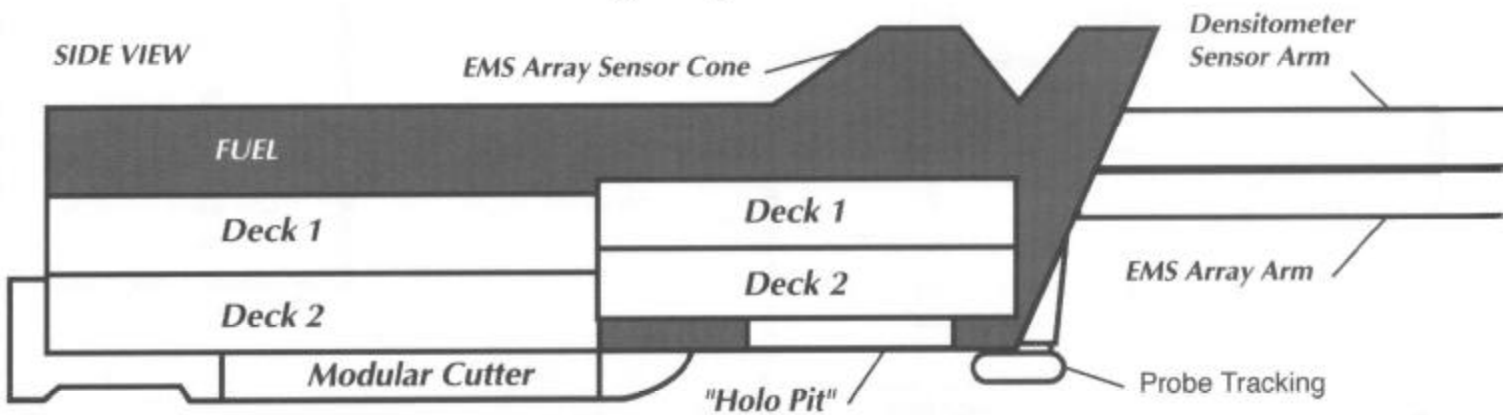
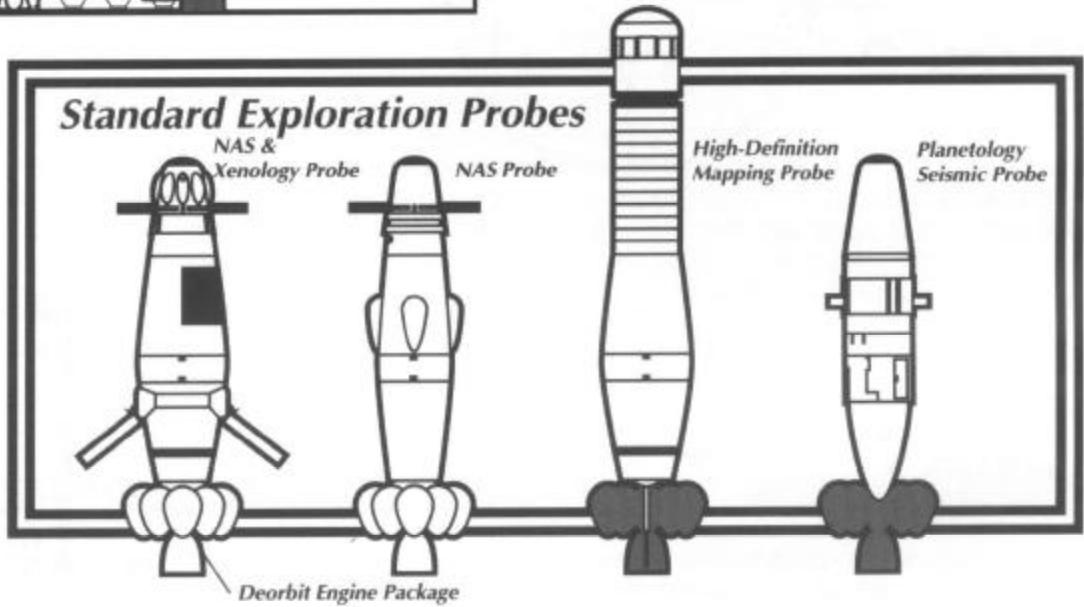
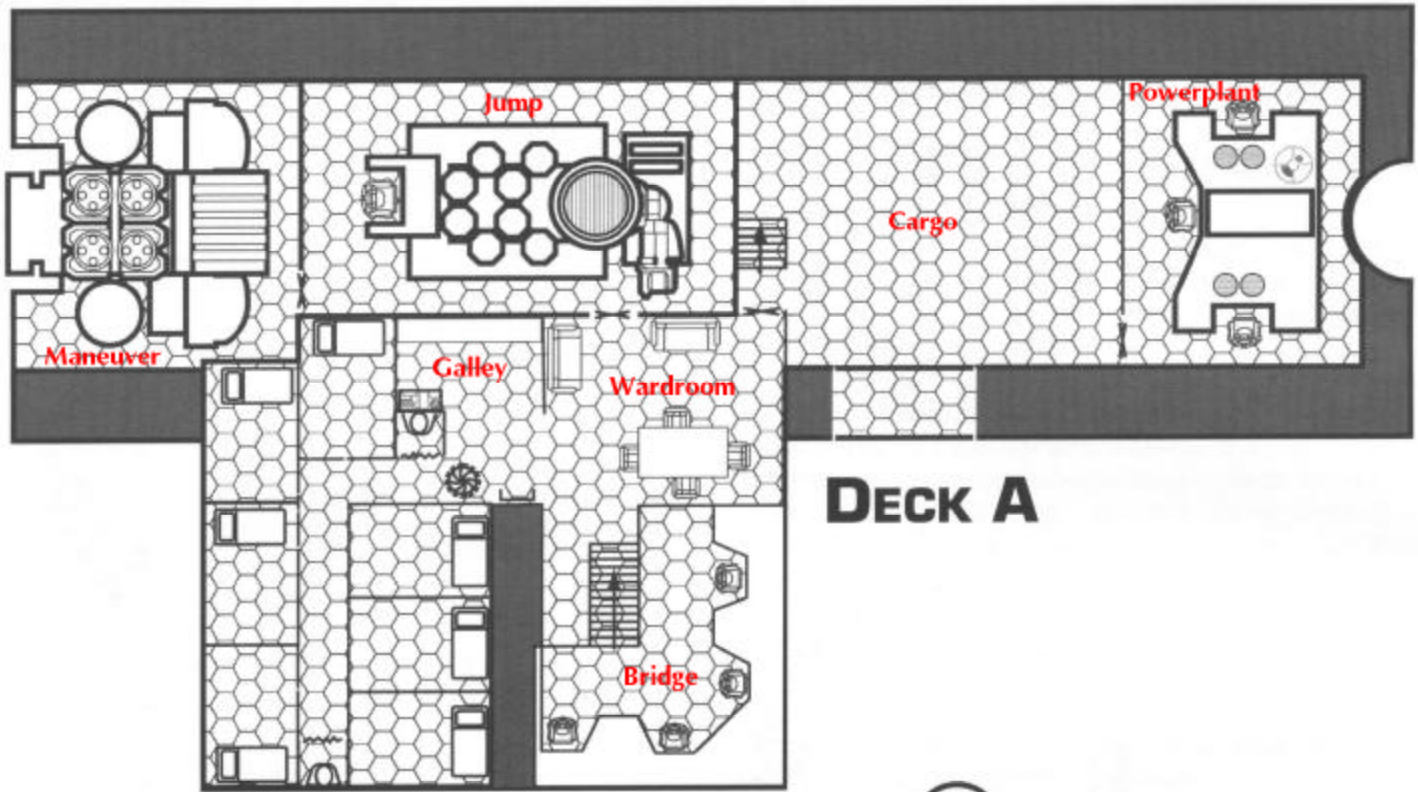
Survey scouts are named after past senior members of the LISS Exploration and Survey Offices.

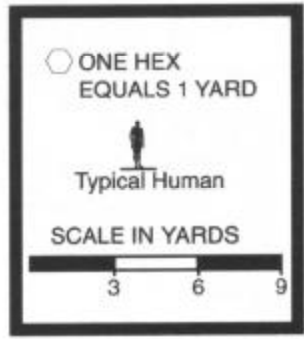
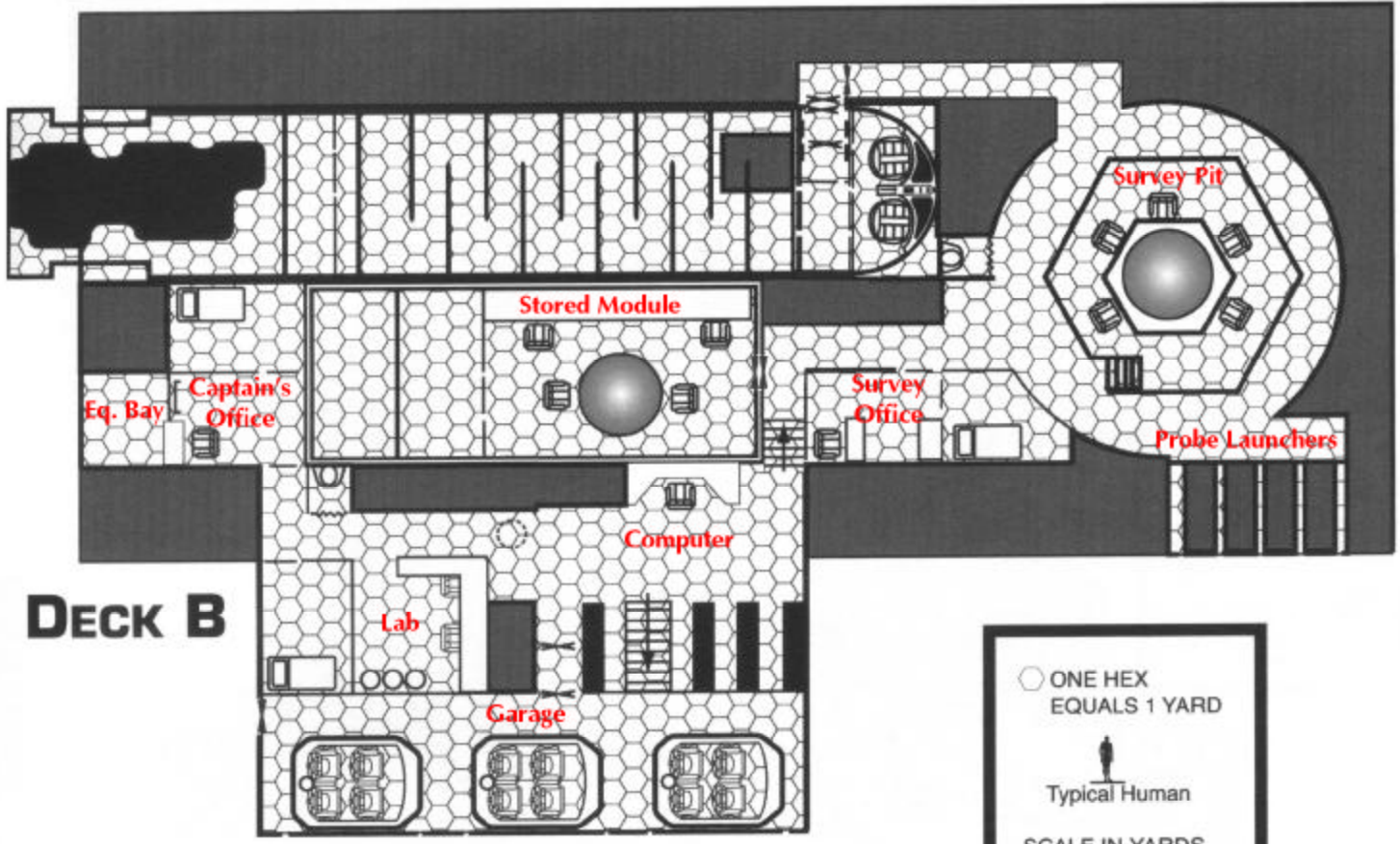
Crew: Pilot (Pilot [Spacecraft]), Navigator (Astrogation), Sensor Officer (Electronics Operation [Sensorsj]), Communications Officer (Electronics Operation [Communications]), Engineer (Engineering and Mechanic), Small Craft Pilot (Pilot [Small Craft]), and 4 survey specialists (Cartography and Electronics Operation [Sensorsj]).

400-ton USL Hull, DR 100, Basic Bridge, Engineering, 15 Maneuver, 16 Jump, 120 Fuel, 162 Spacedock, 10 Staterooms, 4 Lab, Probe, Survey, Utility, 2 Fuel Processor, 27.5 Cargo.

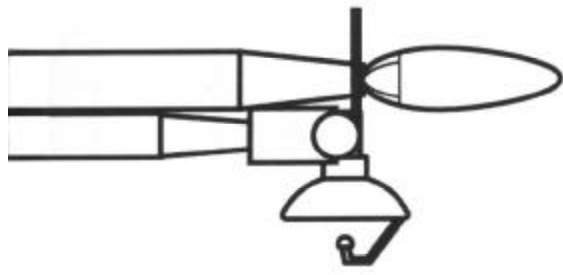
Statistics: EMass 412.3, LMass 728.7, Cost: MCr139.64, HP 37,500. Hull Size Modifier: +9.

Performance: Accel 2.1 Gs, Jump 3.





Deck Plan Symbols		
— — — —	Sliding Door	Iris Valve, Floor and Overhead
— — — —	Interior Partition	Iris Valve
— — — —	Airtight Bulkhead	Iris Valve, Overhead
— — — —	Access Panel	Acceleration Couch
		Fresher
		Iris Valve, Floor



FRONT VIEW

